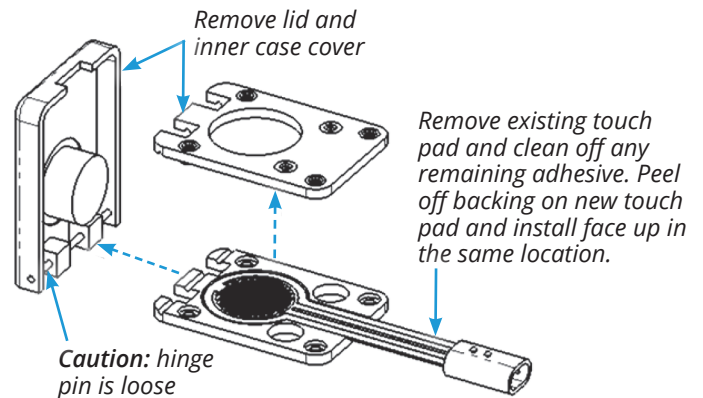
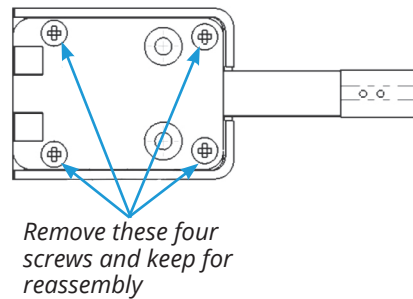
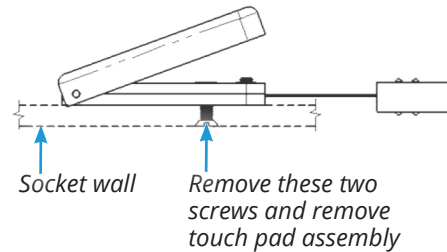


Replacing a Motion Control Touch Pad Sub-Assembly

Fact Sheet

Instructions

1. Disconnect the touch pad from the touch pad cable. Remove the screws (or other attachment) mounting the touch pad to the socket. Set these screws aside for reattaching the touch pad after sub-assembly replacement.
2. Turn over the touch pad assembly so that the attachment side is **face up**. Remove the screws in the four corners of the assembly. Set these screws aside for use in reassembly.
3. Turn the assembly lid side up, and open the lid. Remove the inner case cover and the lid to expose the touch pad sub-assembly. **Be careful to keep the hinge pin in the lid**. Remove the existing sub-assembly from the lower case and use alcohol to clean off any remaining adhesive. Take the new sub-assembly out of the bag and **carefully remove the thin clear-plastic film from the face of the black pad on the round end**. Place the sub-assembly black side down in the cutout in the lower case. Press the round end to ensure it is firmly in place.
4. Grasp the lid with a thumb and a finger over the ends of the hinge pin to hold it in place. Place the lid so the hinge pin is in the groove in the lower case. Set the inner case cover back on the lower case, making sure to capture the hinge pin between the grooves in the two parts. Hold the pieces together and turn the assembly over. Re-install the four corner screws, **making sure the hinge pin stays centered side-to-side and in the groove**. Reinstall the touch pad assembly in its mounted location and reconnect the touch pad cable.



Customer Support

Fillauer Motion Control

115 N. Wright Brothers Drive
Salt Lake City, UT 84116
801-326-3434
motioninfo@fillauer.com

Fillauer



2710 Amnicola Highway
Chattanooga, TN 37406
423.624.0946
www.fillauer.com



Fillauer Europe

Kung Hans väg 2
192 68 Sollentuna, Sweden
+46 (0)8 505 332 00
support@fillauer.com

