

MC Internal Li-Ion Battery Set

Prosthetist Manual

Special Precautions



MC Battery Charger

Use only the Motion Control battery charger with Motion Control batteries. If a replacement charger is needed, contact Motion Control.



Remove the prosthesis before charging

Do not wear the prosthesis while charging. Always remove the prosthesis before plugging the charger into the charging port.



Do not alter device

Do not alter the wiring or circuits in the battery in any way. Do not cross the power leads anywhere in the system. This will cause a short circuit in the system that could lead to fire or explosion and will void the warranty.



Keep the battery system dry

Do not allow the battery system to get wet.



Disposal/Waste Handling

This device, should be disposed of in accordance with applicable local laws and regulations. This includes laws and regulations regarding bacterial or infectious agents, if necessary.



Serious Incidents

In the unlikely event a serious incident occurs in relation to the use of the device, users should seek immediate medical help and contact their prosthetist at the earliest possible convenience. Clinicians should contact Motion Control immediately in the event of any device failure.

Battery Set Components

Wire Harness

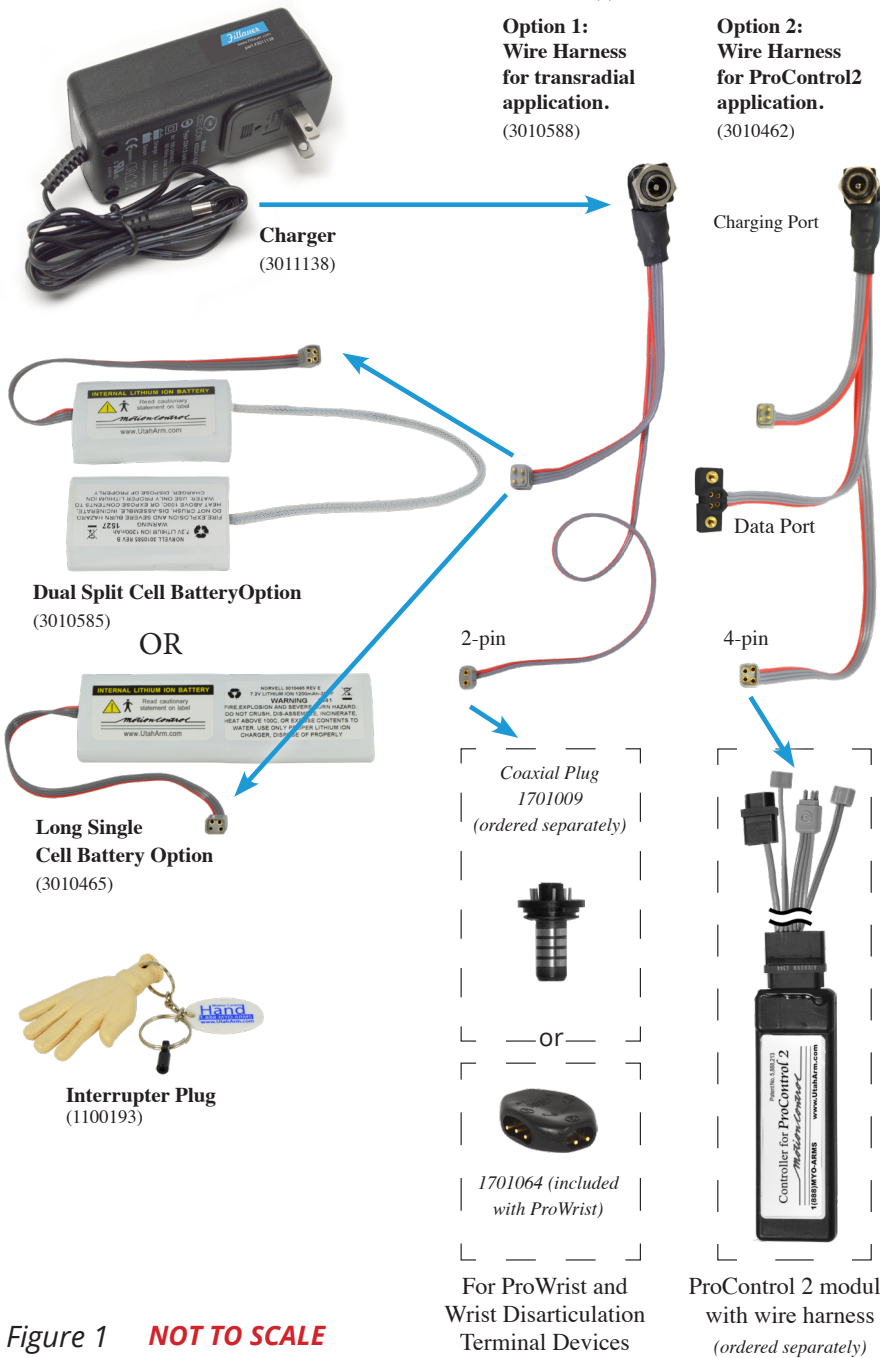


Figure 1 **NOT TO SCALE**

Choosing your configuration

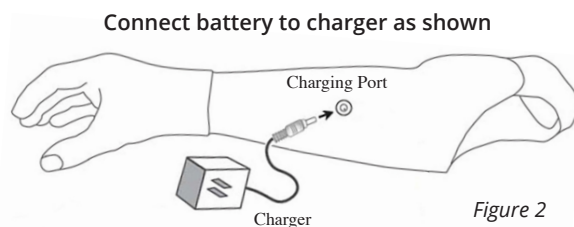
There are multiple configuration options with this package when ordering. Along with the included charger and interrupter plug you will choose either a split-cell or long single battery. If you have a transradial application you will need the option 1 harness. Other needed components are listed in the illustration. If you have a ProControl 2 application you will need to choose option 2, the harness with the dataport and 4-pin end to fit the ProControl 2 module (purchased separately).

Mounting

1. Once the forearm has been laminated, locate a place for the charging port with adequate space for the internal portion of the charging port. Remove the clear portion of the template from the backing, and affix the template to the outside of the forearm.
2. Find a location for the data port (if you have one). This can be in line with the charging port as shown on the template, or somewhere else on the forearm, as long as there is adequate space inside the forearm and sufficient wire length.
3. Use a 3/8 in (9.6mm) drill bit to drill the hole for the charging port.
4. Use a 5/16 in (8 mm) drill bit for the data port hole. Make sure this lines up exactly with the template.
5. Using a 5/64 in (2.3 mm) drill bit, carefully drill the data port mounting screw holes on both sides of the data port. Use an 82° countersink bit to countersink these holes.
6. Mount the charging port and data port inside the forearm.
7. The battery pack can be mounted inside the forearm with Velcro, or double-stick tape. Ensure that mounting is adequate and will not allow the batteries to shake loose.
8. The battery will only plug into one connector of the harness, and the harness will only plug into the wrist end cap or ProWrist one way. Make these connections.

Charging

To charge the battery (*Figure 2*), plug the charger into the wall. Then plug the cable from the charger into the charging port on the prosthesis. The red “Charging” light should illuminate and stay illuminated until the battery is fully charged, then the light will turn green. This usually takes 2-3 hours. If the battery takes longer than 4 hours to charge, return the battery and charger to Motion Control. The battery will likely need to be replaced.



Power On/Off

The MC wire harness does not have an on/off switch. In cases with an electric wrist rotator, such as the MC ProWrist, the system needs to be either plugged into the charger, or powered off when not in use. To power off the system, insert the (provided) interrupter plug into the charging port, and the system will shut off. This plug is attached to a convenient key fob (*Figure 3*).



Figure 3: Interrupter Plug

Limited Warranty

Seller warrants to Buyer that the equipment delivered hereunder will be free from defects in materials and manufacturing workmanship, that it will be of the kind and quality described and that it will perform as specified in Seller's written quotation. The limited warranties shall apply only to failures to meet said warranties that appear within the effective period of this Agreement. The effective period shall be one year (12 months)

from the date of delivery to the fitting center that has purchased the components. Refer to the shipping receipt for the date of shipment.

Return Policy

Returns are accepted for a full refund up to 90 days from date of shipment as long as the item is in resalable condition. Beyond 90 days, returns are not accepted.

Technical Specifications

Operating Temperature: -5° to 60° C (23° to 140° F)

Transport & Storage Temperature: -20° to 50° C (-4° to 122° F)

Battery: Lithium-Ion, 1150 mAh

Voltage: 7.2 Vdc (nominal)

Declaration of Conformity

The product herewith complies with the Medical Device Directive 93/42/EEC guidelines, and is registered with the United States Food and Drug Administration (Registration No. 1723997).



Customer Support

Americas, Oceania, Japan

Fillauer Motion Control

115 N. Wright Brothers Drive
Salt Lake City, UT 84116
801-326-3434
motioninfo@fillauer.com

Europe, Africa, Asia

Fillauer Europe

Kung Hans väg 2
192 68 Sollentuna, Sweden
+46 (0)8 505 332 00
support@fillauer.com

The logo for Fillauer, featuring the brand name in a stylized, blue, cursive script font with a registered trademark symbol.

Fillauer

2710 Amnicola Highway
Chattanooga, TN 37406
423.624.0946
www.fillauer.com



Fillauer Europe

Kung Hans väg 2
192 68 Sollentuna, Sweden
+46 (0)8 505 332 00



© Fillauer Motion Control, 1910017 Rev K 05-23-25