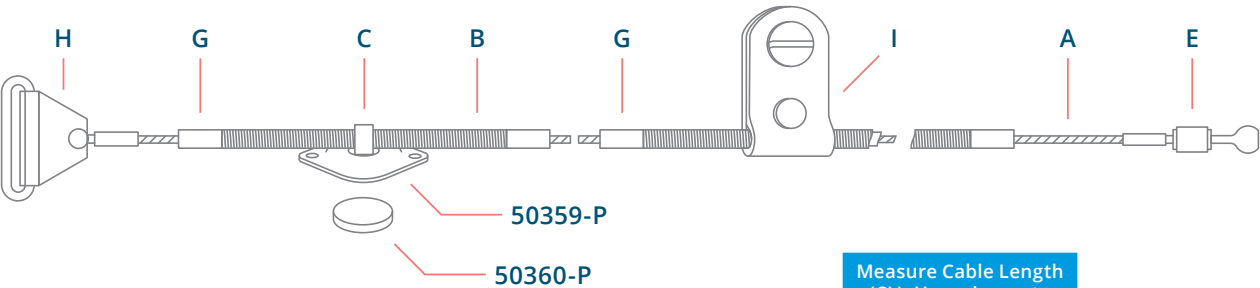
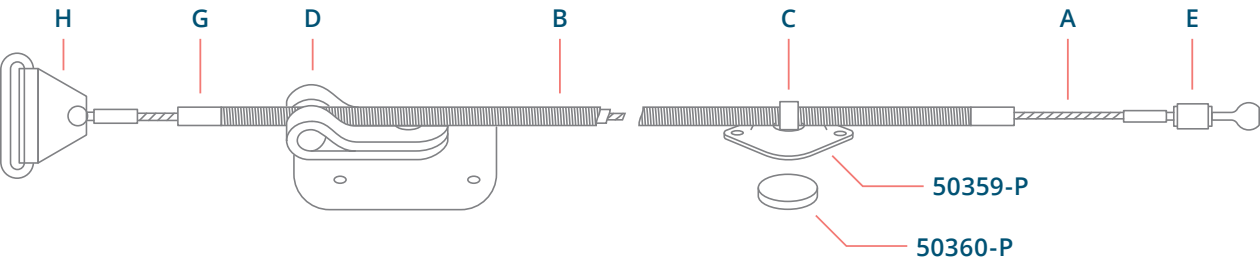


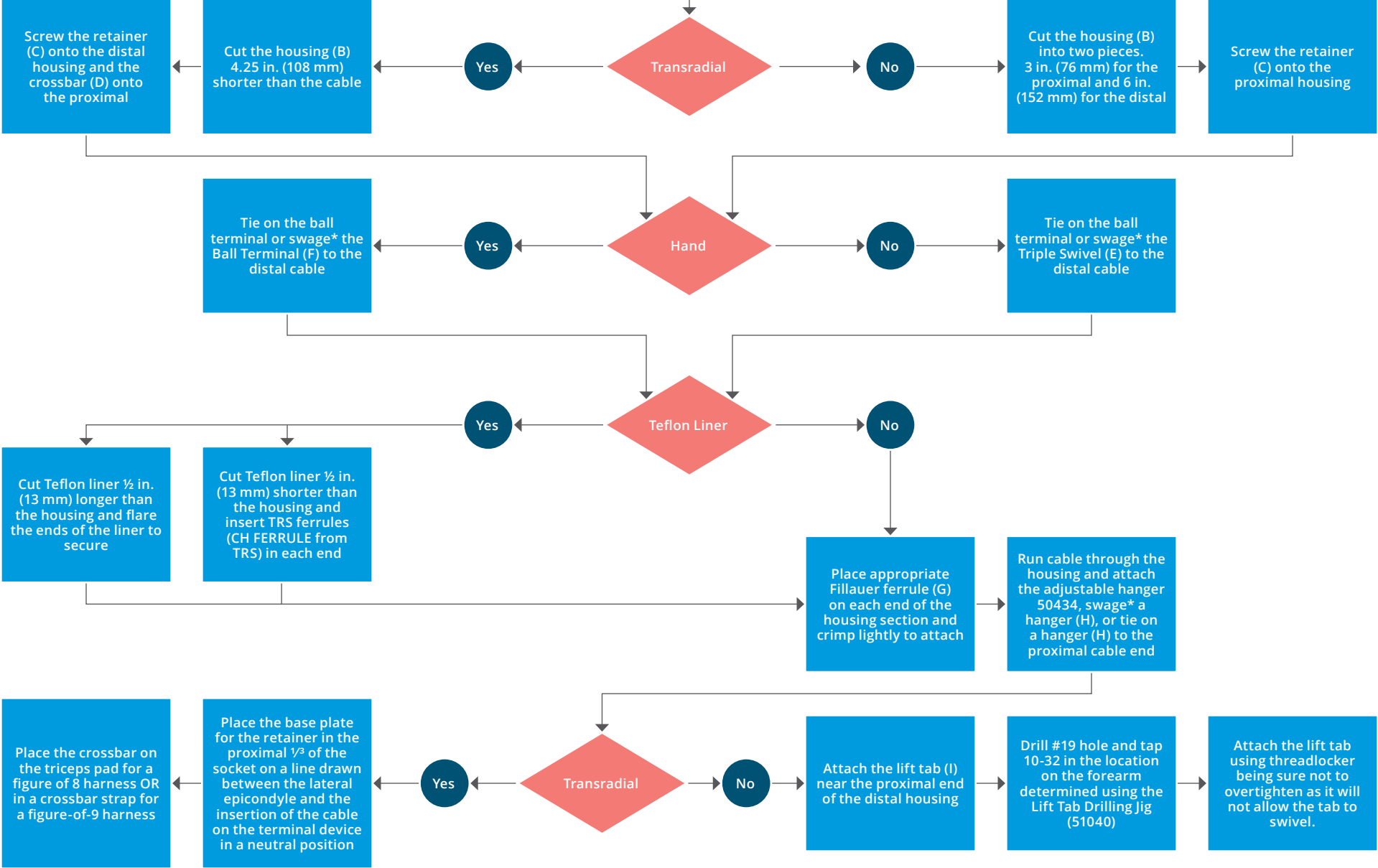
# Hosmer Cabling Guide

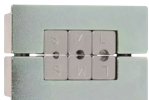






Cable and Assembly	A	B	C	D	E		F		G	H	I	
Control Cable Assembly	Cable	Housing	Retainer	Crossbar Only	Crossbar Assembly	Triple Swivel with grommet	Ball Terminal	Ball	Ferrule	Hanger for 1 in. Dacron	Standard Lift Tab	Saniprene Lift Tab
Small 3⁄64 in.	50321 25 ft. Roll	50455 25 ft. Roll	50364-P	50366-P	50365	50352-P	50355-P	3⁄16	50423-P	50377-P	50388	
Standard 1⁄16 in.*	50318 25 ft. Roll	50455 25 ft. Roll	50364-P	50366-P	50365	50348-P	50354-P	3⁄16	50423-P	50374-P	50388	
Standard with Teflon (Preferred form)	50318 25 ft. Roll	50456 25 ft. Roll	50363-P	50367-P	50373	50348-P	50354-P	3⁄16	61445-P	50374-P	50408	158525
Heavy Duty 3⁄32 in.	50319 25 ft. Roll	50456 25 ft. Roll	50363-P	50367-P	50373	50353-P 62526 HD XHD	50356-P	3⁄16	50424-P	50383-P	50408	158525
Spectra Cable	SPECTRA 400 ULTRA 50 ft. Roll	50456 25 ft. Roll	50363-P	50367-P	50373	N/A	ASPCB1 ASPCB2 ASPCB3	3⁄16 D. Ball 5⁄32 D. Ball 9⁄32 D. Solo Ball	CH FERRULE	ASPCB1M	50408	158525



Measure Cable Length (CL). Use scissors to cut spectra cable 5 in. longer than CL, OR use cable cutters to cut steel cable 1.75 in. (44mm) shorter than CL.



Description	Product Number
 Cable Swaging Tool	50520
 Lift Tab Drilling Jig	51040
 Adjustable Hanger	50434
 TRS Ferrules	CH FERRULE
 Teflon Liner (25 ft.)	50482

\* Swage using part 50520 and a drop of Locktite 620